



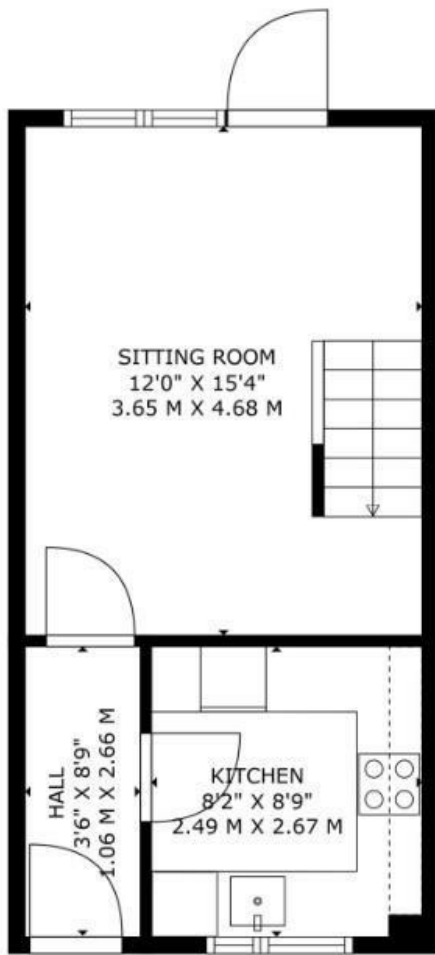
## Haselmere Close, Bury St. Edmunds, Suffolk, IP32 7JQ

Rent - £1,215 PCM      Deposit - £1,401

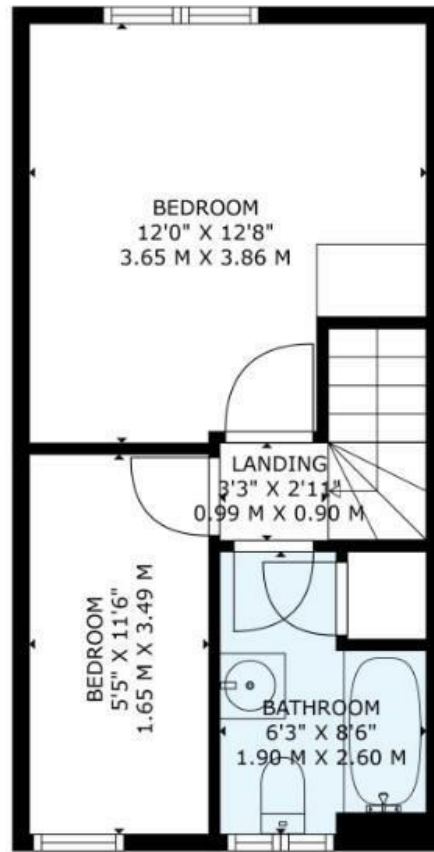
This beautifully presented two-bedroom modern home is situated on the popular Haselmere Close in Bury St Edmunds, offering stylish and comfortable living in a convenient residential location. The property features a bright and welcoming living area, a modern kitchen, two well-proportioned bedrooms, and a contemporary bathroom. Finished in a neutral style throughout, the home is ideal for someone looking for a well-maintained property close to local amenities.

- MID TERRACED HOME
- 2 BEDROOMS
- MODERN KITCHEN
- FAMILY BATHROOM
- GARAGE, DRIVEWAY PARKING AND GARDEN
- CLOSE TO TOWN CENTRE
- ELECTRIC HEATING & ENERGY RATING - D
- APPROXIMATE SIZE - 581 SQFT
- COUNCIL TAX BAND - B
- AVAILABLE NOW





FLOOR 1



FLOOR 2

